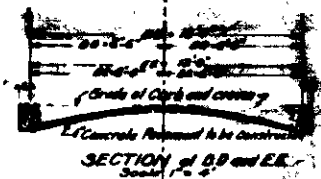
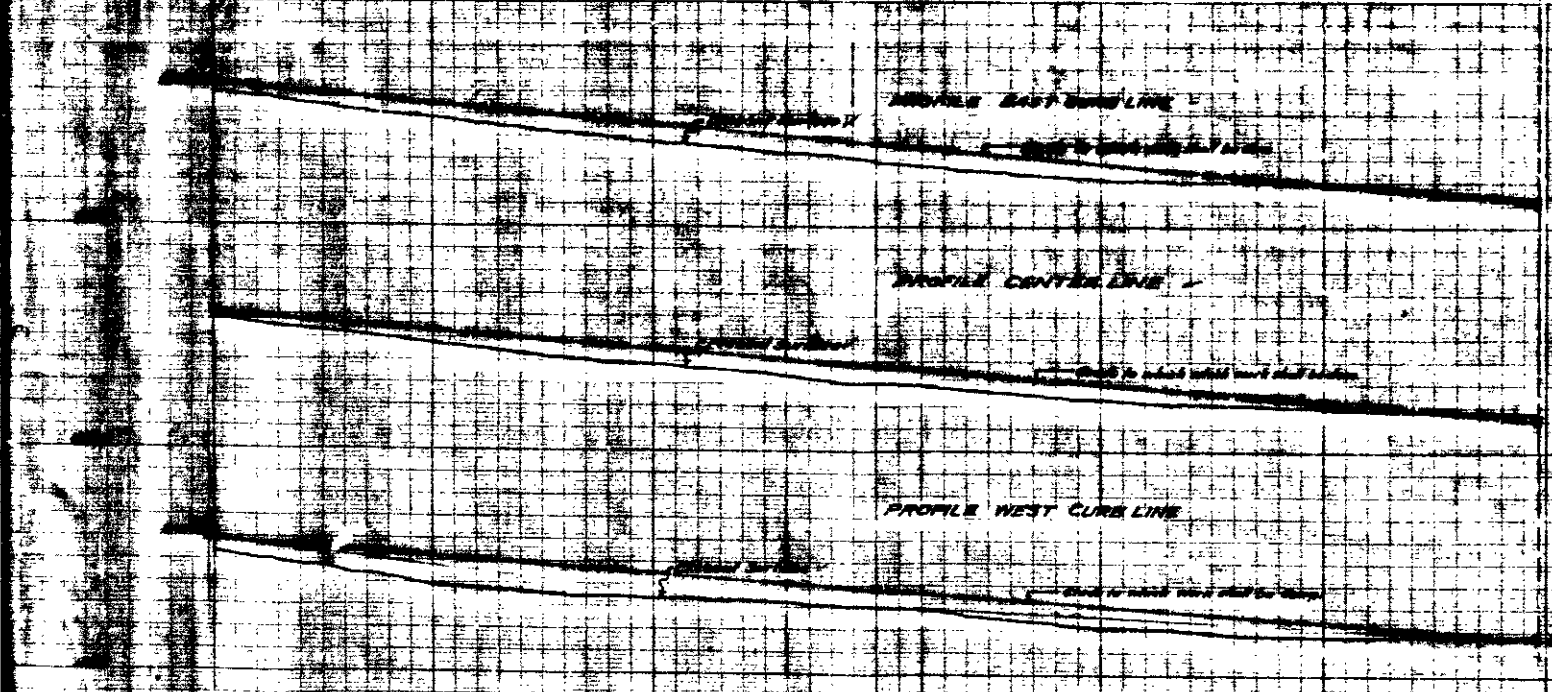


PLAN No 682
 For THE IMPROVEMENT OF
K STREET
 BETWEEN RUALTO AVENUE & SECOND STREET
 in the City of San Bernardino, California
 July 11, 1924 C.E. Johnson City Engineer

LEGEND
 " or in means inch or inches
 ' or ft. means feet or feet
 E means Elevation
 Concrete Sidewalk to be constructed shown thus
 Concrete Pavement to be constructed shown thus
 Concrete Curb to be constructed shown thus
 Section of Concrete Curb shown thus
 No. means number
 Section of Concrete Pavement shown thus
 Section of Concrete Sidewalk shown thus

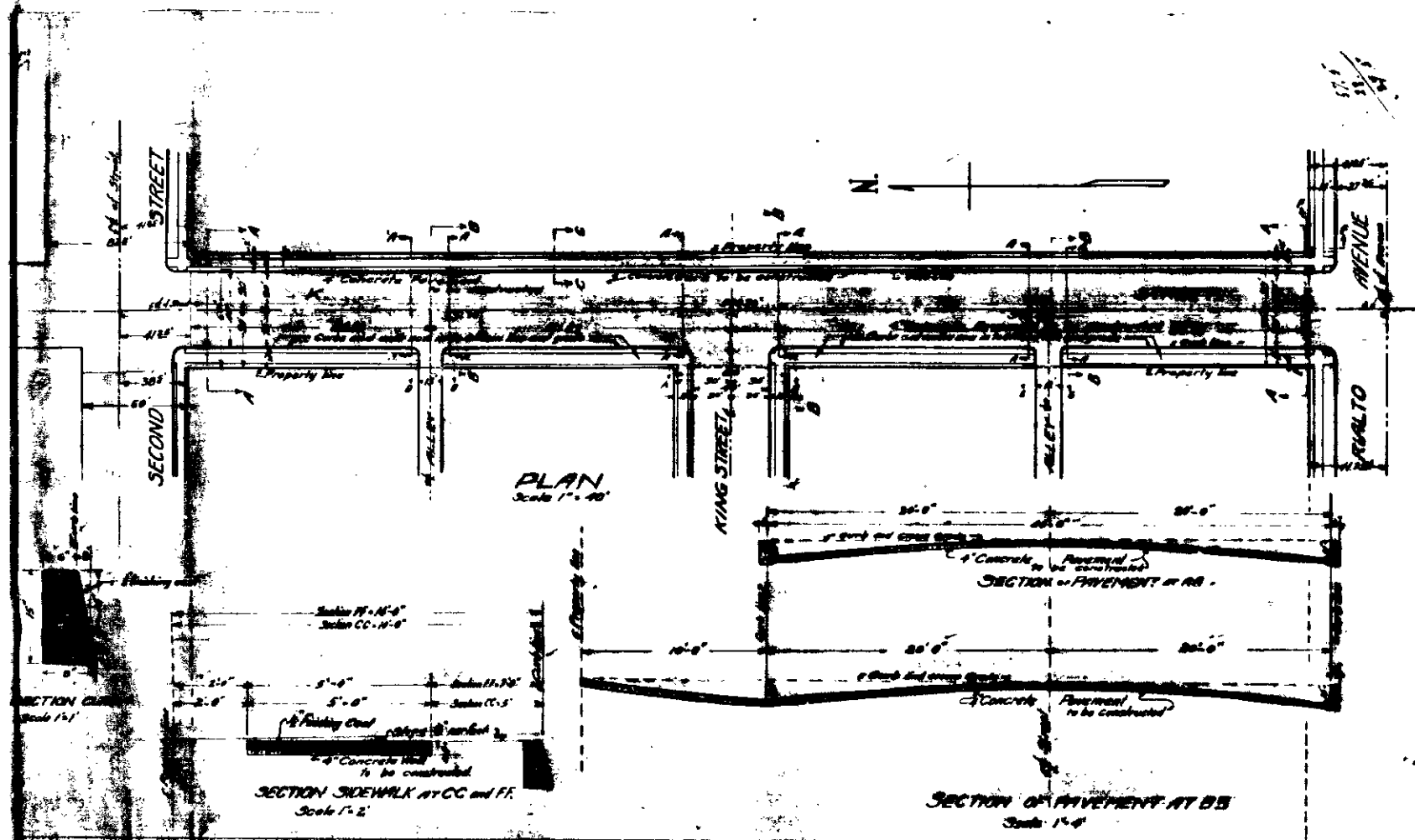


FILED
 JUL 11 1924
 C.E. Johnson



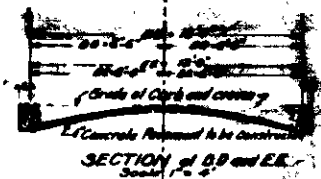
PROFILE LEGEND
 Present Surface shown by black line
 Grade to which work shall be done shown by red line
 Scale Vertical 1" = 4'
 Horizontal 1" = 20'

All elevations shown in red line shall be feet and are above datum which is 100.00 feet below the City Bench Mark as established by ordinance No 393 of the City of San Bernardino, California

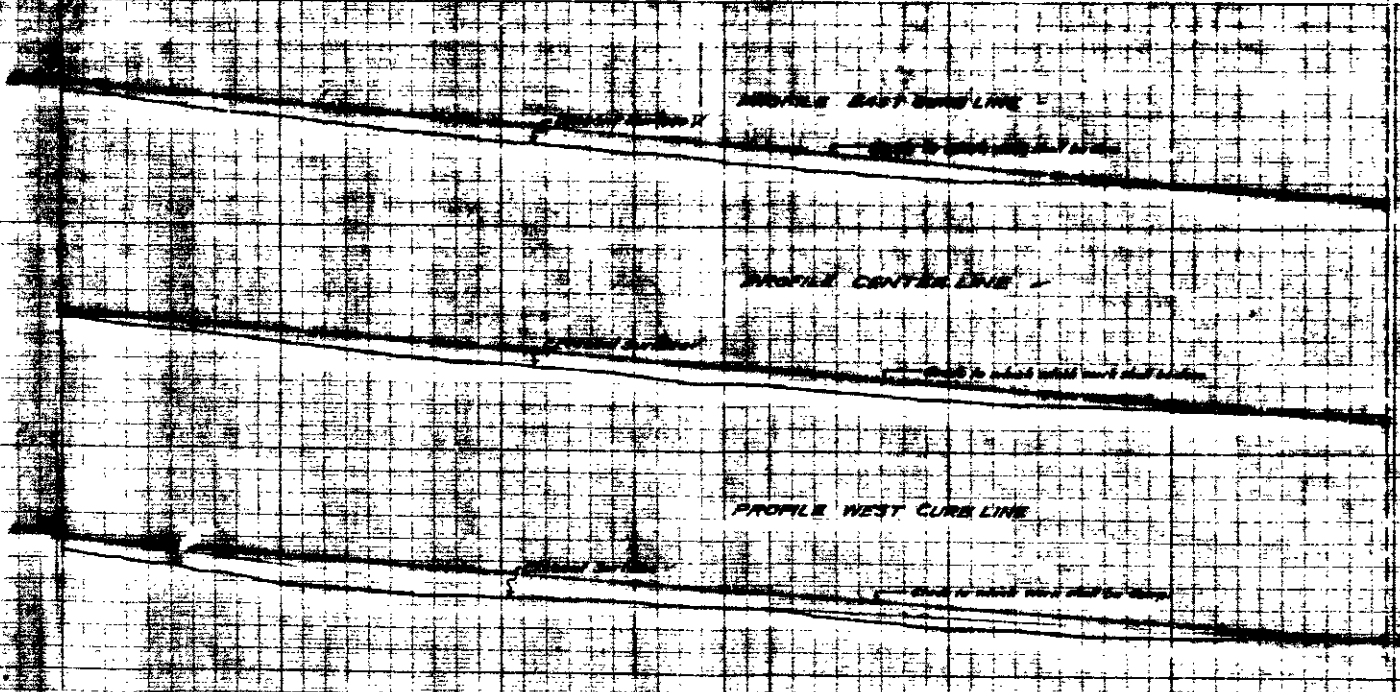


PLAN No 682
 For THE IMPROVEMENT OF
K STREET
 BETWEEN RUALTO AVENUE & SECOND STREET
 in the City of San Bernardino, California
 July 11, 1924 C.E. Johnson City Engineer

LEGEND
 " or in means inch or inches
 ' or ft. means feet or feet
 E means Elevation
 Concrete Pavement to be constructed shown thus
 Concrete Curb to be constructed shown thus
 Section of Concrete Curb shown thus
 No. means number
 Section of Concrete Pavement shown thus
 Section of Concrete Curb shown thus

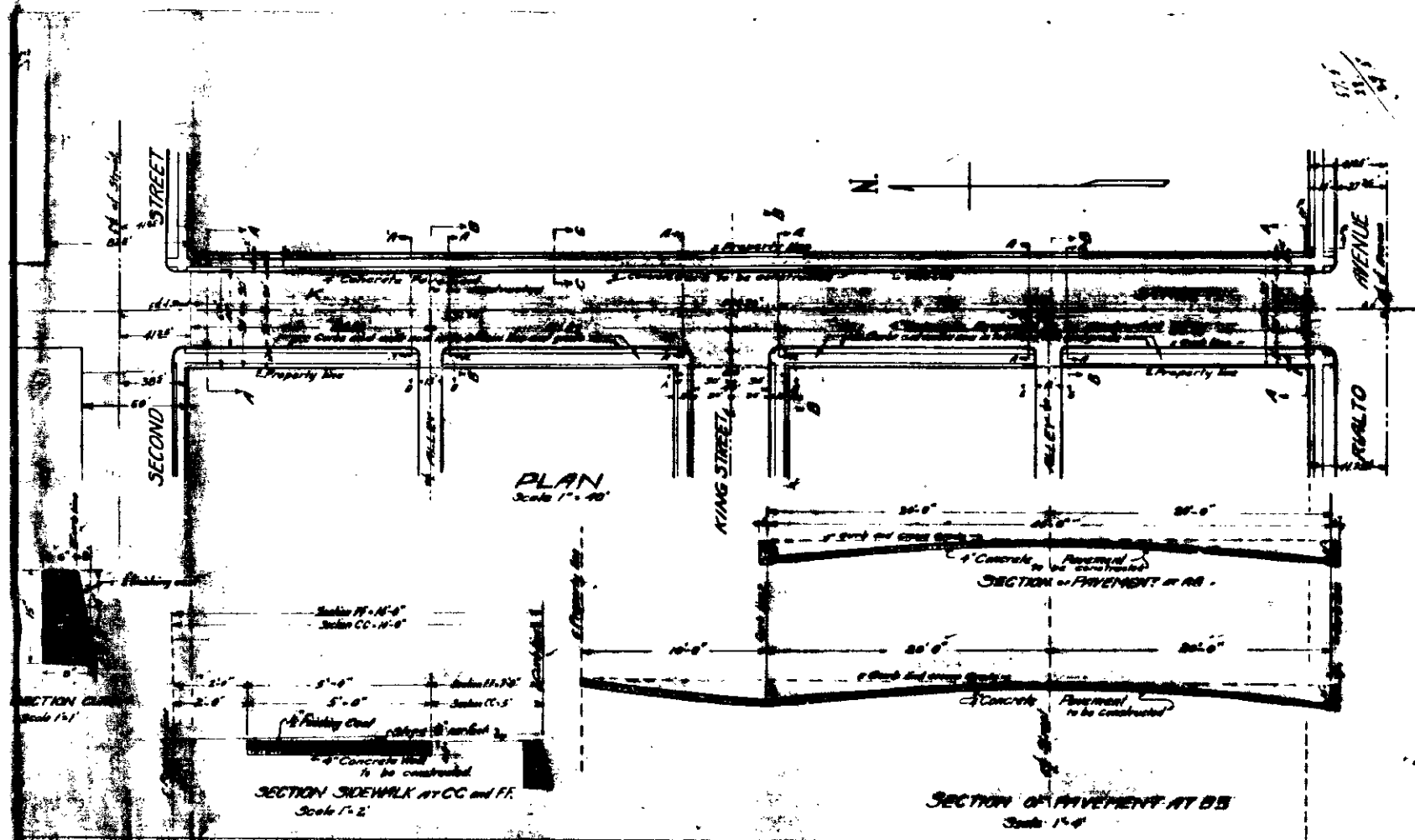


FILED
 JUL 11 1924
 C.E. Johnson



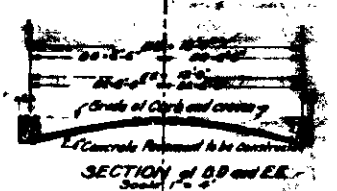
PROFILE LEGEND
 Present Surface shown by black line
 Grade to which work shall be done shown by red line
 Scale Vertical 1" = 4'
 Horizontal 1" = 20'

All elevations shown in red line are
 feet and are above datum which is 100.00
 feet below the City Bench Mark as established
 by ordinance No 398 of the City of
 San Bernardino, California

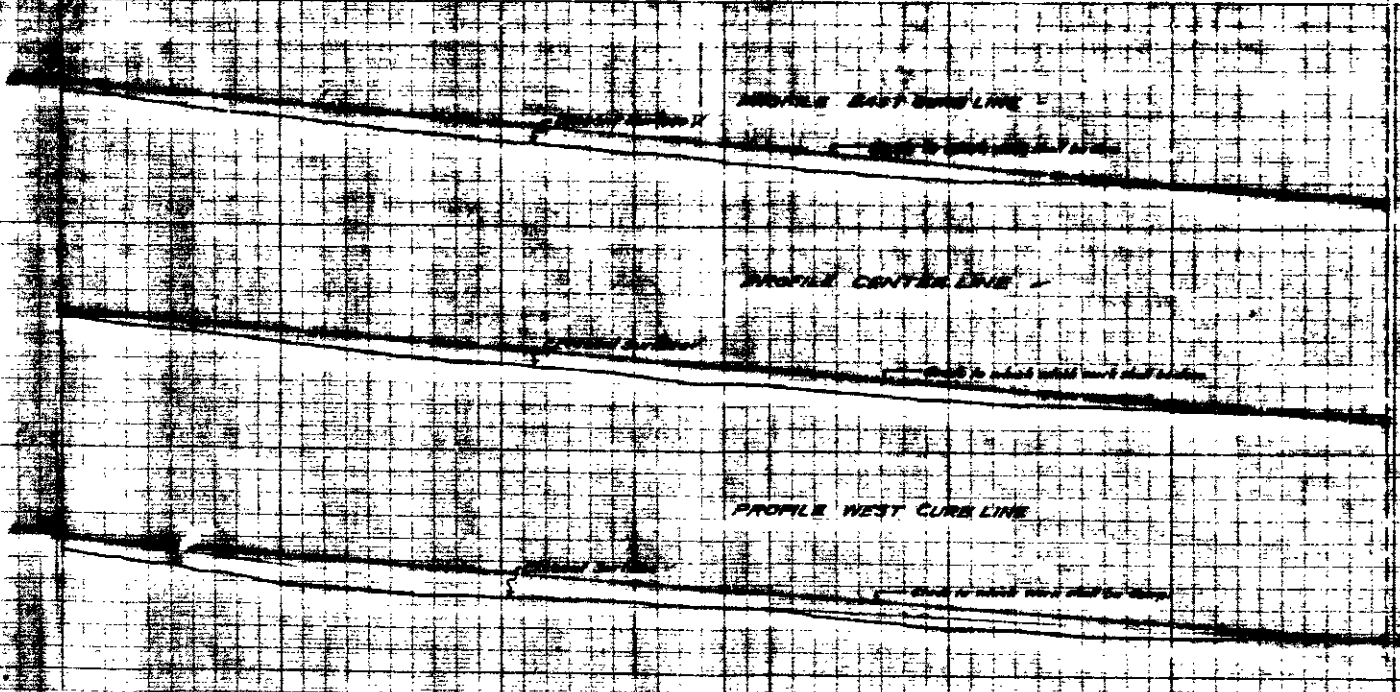


PLAN No 682
 For THE IMPROVEMENT OF
K STREET
 BETWEEN RIALTO AVENUE & SECOND STREET
 in the City of San Bernardino, California
 July 11, 1924 C.E. Johnson City Engineer

LEGEND
 " or in means inch or inches
 ' or ft. means feet or feet
 E means Elevation
 Concrete Pavement to be constructed shown thus
 Concrete Curb to be constructed shown thus
 Section of Concrete Curb shown thus
 No. means number
 Section of Concrete Pavement shown thus
 Section of Concrete Curb shown thus



FILED
 JUL 11 1924
 City Engineer



PROFILE LEGEND
 Present Surface shown by black line
 Grade to which work shall be done shown by red line
 Scale Vertical 1" = 4'
 Horizontal 1" = 20'

All elevations shown in red line shall be
 feet and are above datum which is 100.00
 feet below the City Bench Mark as established
 by ordinance No 393 of the City of
 San Bernardino, California